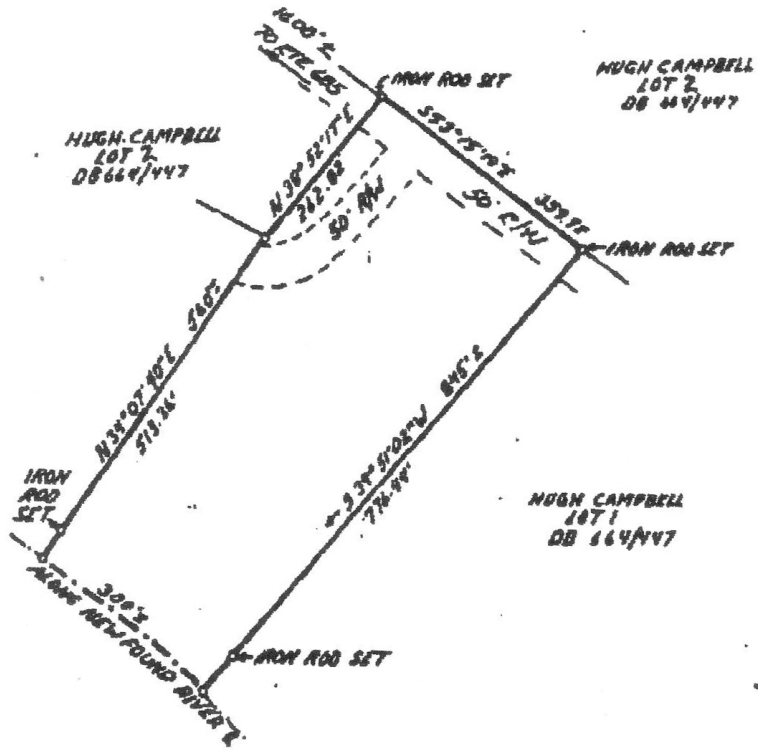


SCALE: 1" = 200'
 BEARING BASE: COMPASS BEARINGS



PLAT SHOWING 4.92 ACRES OF LAND LOCATED SOUTH
 OF FOUR CHURCH IN THE BEAVERDAM DISTRICT OF
 HANOVER, VIRGINIA.
 APRIL 16, 1907

OWNER: HUGH CAMPBELL

AREA: 4.92 ACRES

REFERENCE: DB. 664, P. 447
 PART OF LOT 1
 PART OF TAX PARCEL 25-21



BOOK 659 PAGE 94